

## THE MEMORIAL

Formed in memory of individuals who were dedicated to the development and advancement of rural electrification for the benefit of their member/consumers, **The Scholarship** provides financial assistance to electric cooperative family members seeking a college or university education.

## PURPOSE

**The Scholarship** provides financial assistance for qualified individuals who are seeking a college or university education.

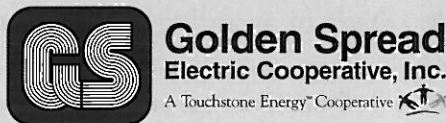
## QUALIFYING SCHOOLS

Candidates must be enrolled as a full-time student in an accredited college or university in the states of Texas or Oklahoma.

## ADMINISTRATOR

Opportunity Plan, Inc.  
504 24th St.  
Canyon, Texas 79015

[www.opportunityplan.com](http://www.opportunityplan.com)



**SCHOLARSHIP SELECTION COMMITTEE:** The Scholarship Selection Committee is the Executive Committee of Opportunity Plan, Inc., along with one individual designated by the Board of Directors of Golden Spread Electric Cooperative.

**APPLICATIONS:** Applications are available at Golden Spread Electric Cooperative, at the offices of each of its member systems, and on the website: [www.gsec.coop](http://www.gsec.coop).

### Opportunity Plan, Inc.

504 24th Street • P.O. Box 1035  
Canyon, Texas 79015-1035  
806-655-2528

### Golden Spread Electric Cooperative

905 S. Fillmore Street, Suite 300  
P.O. Box 9898  
Amarillo, Texas 79105-5898  
806-379-7766

### Bailey County Electric Cooperative

305 E. Avenue B • P.O. Box 1013  
Muleshoe, Texas 79347-1013  
806-272-4504

### Big Country Electric Cooperative

1010 West South 1st Street  
P.O. Box 518  
Roby, Texas 79543-0518  
325-776-2244

### Coleman County Electric Cooperative

3300 N. Highway 84 • P.O. Box 860  
Coleman, Texas 76834-0860  
325-625-2128

### Concho Valley Electric Cooperative

2530 Pulliam Street • P.O. Box 3388  
San Angelo, Texas 76902  
325-655-6957

### Deaf Smith Electric Cooperative

1501 E. First St. • P.O. Box 753  
Hereford, Texas 79045-0753  
806-364-1166

### Greenbelt Electric Cooperative

706 10th Street • P.O. Box 948  
Wellington, Texas 79095-0948  
806-447-2536

### Lamb County Electric Cooperative

2415 South Phelps Avenue  
Littlefield, Texas 79339-5699  
806-385-5191

09/02/2011

### Lighthouse Electric Cooperative

Highway 70 East • P.O. Box 600  
Floydada, Texas 79235-0600  
806-983-2814

### Lyntegar Electric Cooperative

1807 Main Street • P.O. Box 970  
Tahoka, Texas 79373-0970  
806-561-4588

### North Plains Electric Cooperative

14585 U.S. Highway 83 North  
P.O. Box 1008  
Perryton, Texas 79070-1008  
806-435-5482

### Rita Blanca Electric Cooperative

12210 U.S. Highway 87 North  
P.O. Box 1947  
Dalhart, Texas 79022-5947  
806-249-4506

### South Plains Electric Cooperative

4727 S. Loop 289, Suite 200  
P.O. Drawer 1830  
Lubbock, Texas 79408-1830  
806-775-7732

### Southwest Texas Electric Cooperative

101 East Gillis • P.O. Box 677  
Eldorado, Texas 76936-0677  
325-853-2544

### Swisher Electric Cooperative

401 SW 2nd Street • P.O. Box 67  
Tulia, Texas 79088-0067  
806-995-3567

### Taylor Electric Cooperative

226 CR 287 • P.O. Box 250  
Merkel, Texas 79536  
325-793-8500

### Tri-County Electric Cooperative

302 E. Glaydas • P.O. Drawer 880  
Hooker, Oklahoma 73945-0880  
580-652-2418



**Golden Spread  
Electric Cooperative, Inc.**

A Touchstone Energy™ Cooperative 

# DIRECTORS MEMORIAL SCHOLARSHIP

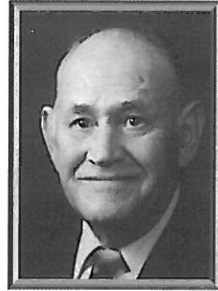
Administered by  
**OPPORTUNITY PLAN, INC.**  
Canyon, Texas

## THE FOUNDER

Golden Spread Electric Cooperative, Inc. of Amarillo, Texas, a generation and transmission cooperative owned by 15 Texas and one Oklahoma electric distribution cooperatives, founded **The Scholarship** in 1991 with an initial contribution. Continuing contributions by Golden Spread and various individuals provide additional capital for **The Scholarship** fund.



*James T. Hull*



*Dwight Hutchison*



*Connie Gupton*



*Guy F. Kelley*



*Larry M. Lockwood*



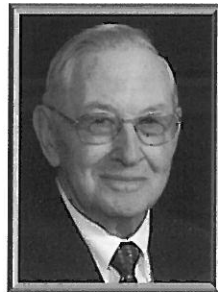
*J.C. (Jim) Roberts*



*Weldon Gray, P.E.*



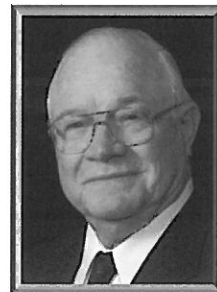
*Robert "Bobby" Green*



*Kenneth Mathews*



*Richard "Dick" Montgomery*



*Louis Lloyd*

## THOSE REMEMBERED

**James T. Hull** was instrumental in the formation of Golden Spread Electric Cooperative, Inc. and served as its first president and its first chairman of the board, guiding the initial development of the organization. Mr. Hull served as the chairman of the board of Golden Spread and also as President of Deaf Smith Electric Cooperative, Hereford, Texas.

**Dwight Hutchison** of Spearman, Texas represented North Plains Electric

Cooperative. He faithfully served as a director of both Golden Spread and North Plains Electric Cooperative, Perryton, Texas.

**Connie Gupton**, general manager of Bailey County Electric Cooperative Association, Muleshoe, Texas was one of the original directors of Golden Spread and had retired.

**Guy F. Kelley** of Earth, Texas served for 10 years on the Golden Spread Board, and was an enthusiastic supporter of rural electrification. He was a member of the Board of Directors of Bailey County Electric Cooperative for 17 years, and served as secretary and president.

**Larry M. Lockwood** of Spade, Texas served on the Lamb County Electric Cooperative Board of Directors for 23 years and on the Golden Spread Board for 17 years. Larry was instrumental in the development of the Mustang Station power plant.

**J.C. (Jim) Roberts** devoted 44 years to the Co-op program in Texas. Jim joined South Plains Electric Cooperative in 1959 as an engineer and then moved to San Bernard Electric Cooperative in Bellville, Texas and served as their operations manager and later general manager. Jim returned to South Plains as its general manager. Jim served as Secretary-Treasurer, Vice President and as President on NRECA's board, President on TEC's board, and served on the CFC board.

**Weldon Gray**, P.E. of San Angelo, served as Vice President and CEO of Concho Valley Electric Cooperative for ten years. Mr. Gray was in the electric power industry for 26 years, 19 of which were in the rural electric cooperatives. Weldon served on numerous electric industry boards and committees on local, state and national levels.

**Robert "Bobby" Green** served as director at Rita Blanca Electric Cooperative, Inc. for twenty two years of which fifteen of those years he served as President of the Board. Mr. Green was on the Golden Spread Electric Cooperative Board from 1985 to 1998.

**Kenneth Mathews** served as President of the Board at Greenbelt Electric Cooperative, Inc. and was on that Board for 41 years. Mr. Mathews served on Golden Spread Electric Cooperative, Inc. Board from 1984 to 2010.

**Richard "Dick" Montgomery** was on the Golden Spread Board of Directors from 1991 – 1992 when he served as interim General Manager of Deaf Smith Electric Cooperative.

**Louis Lloyd** served on the Board of Directors of Lighthouse Electric Cooperative in Floydada for 30 years, including 20 years as Board President. He served on the Golden Spread Electric Cooperative Board of Directors for 20 years.

The Founder intends that the names of other Golden Spread directors who have been faithful stewards for the Golden Spread Cooperative family be included in those remembered.

The **GOLDEN SPREAD ELECTRIC COOPERATIVE DIRECTORS MEMORIAL SCHOLARSHIP (The Scholarship)** was established initially in memory of **James T. Hull, Dwight Hutchison** and **Connie Gupton**. **The Scholarship** also honors the memory of **Guy F. Kelley, Larry M. Lockwood, J.C. (Jim) Roberts, Weldon Gray, P.E., Robert "Bobby" Glen Green, Kenneth Mathews, Richard "Dick" Montgomery** and **Louis Lloyd**. The goal is to provide financial assistance for qualified individuals who seek a college or university education.

## ELIGIBILITY

**The Scholarship** is available to an entering freshmen college or university student who is a member, or spouse or child of a member, or child whose guardian is a member of a rural electric cooperative which is an owner (member) of Golden Spread Electric Cooperative.

**The Scholarship** is \$2000, payable \$500 for each of four semesters through the sophomore year.

Satisfactory scholastic performance and appropriate personal standards must be maintained for continuing eligibility.

Students must possess the qualities of honor, integrity, thrift, good moral character and a sincere desire to achieve their educational goals. Grades are not the sole criteria in awarding **The Scholarship**, however, may determine the final award if all other things are found equal by the Selection Committee.